



# TALONS & TRIUMPHS

NORTH TEXAS 2025

## IMPACT REPORT 2025

---

Welcome  
New Team Members

---

Prairie Conservation  
and Native Plants

---

Rehab  
Success Stories

---

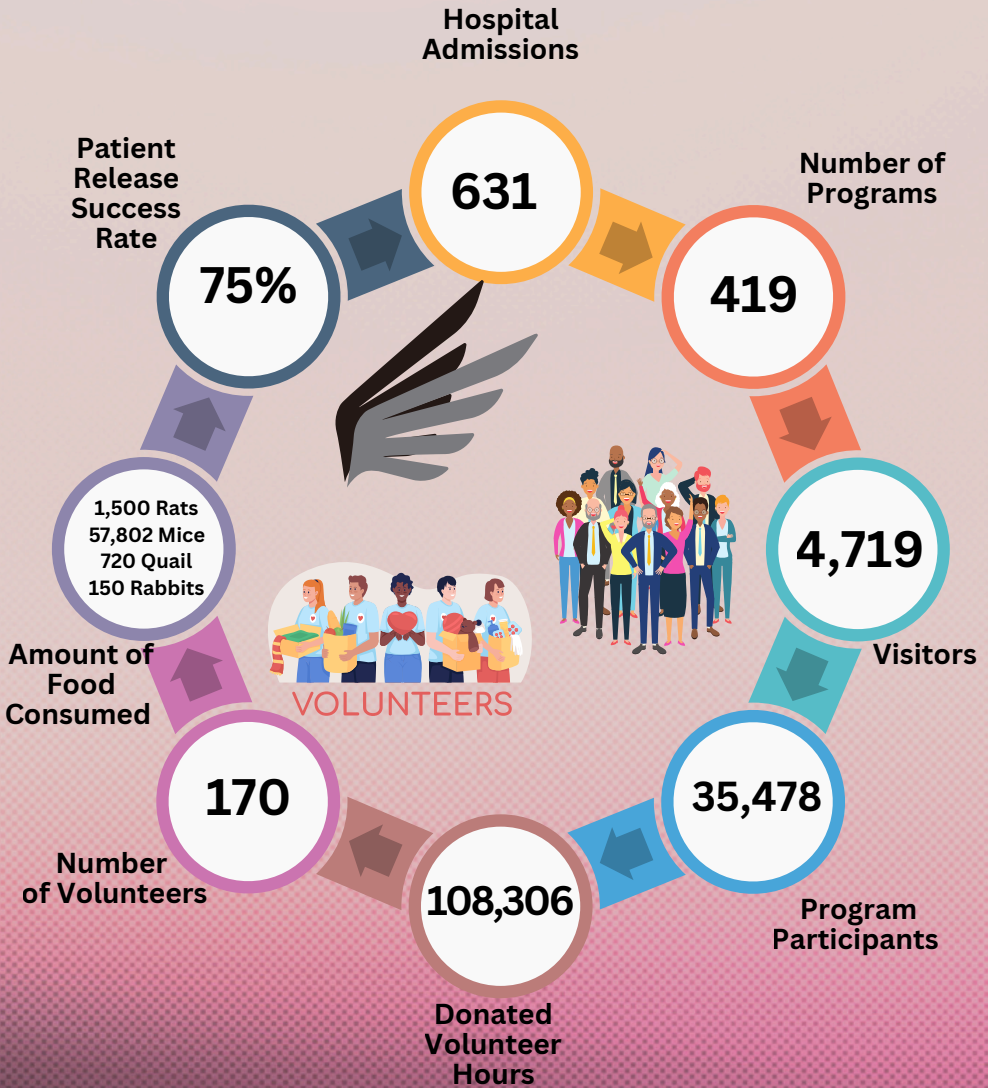
Education and  
Ambassadors

---

Blackland  
Prairie  
Raptor  
Center



# IMPACT 2025



## OUR MISSION

Blackland Prairie Raptor Center is dedicated to environmental preservation through public education and the conservation of birds of prey and wildlife in their natural habitat. Named after the tallgrass prairie that once covered more than 23,500 square miles of Texas from the Red River to San Antonio, Blackland Prairie Raptor Center is a rehabilitation and conservation education organization, specializing in fostering better public understanding of the relationship between birds of prey and healthy ecosystems.

BPRC is state and federally licensed. Texas Parks and Wildlife permit #: REH-0715-124  
U.S. Fish and Wildlife Service permit #: MB138982

## OUR TEAM

Executive Director: Laura Johnson  
Medical Director: Janel Mason, DVM  
Community Engagement Director: Marla Layne  
Community Engagement Mgr: Hailey LeBaron  
Maintenance & Operations Mgr: Karen Mitchell  
Conservation & Restoration Mgr: Cody Hoya  
Raptor Ambassador Mgr: Cheryl Circo  
Program Coordinator: Andrea Darley Hanson  
Volunteer Coordinator: Stephanie Losoya  
Accountant: Wendy Matthews

## CONTACT US

Blackland Prairie Raptor Center  
1625 Brockdale Park Road Lucas, TX 75002

Telephone: [\(469\) 964-9696](tel:469-964-9696)

Programs/Events: [education@bpraptorcenter.org](mailto:education@bpraptorcenter.org)  
General Questions: [info@bpraptorcenter.org](mailto:info@bpraptorcenter.org)  
Volunteer: [volunteer@bpraptorcenter.org](mailto:volunteer@bpraptorcenter.org)

Follow  
Us!

[facebook.com/bpraptorcenter](https://facebook.com/bpraptorcenter)  
[instagram.com/bpraptorcenter](https://instagram.com/bpraptorcenter)



Dear Friends, Supporters, and Conservation Partners,

As we reflect on 2025, I am filled with immense gratitude for the dedication, passion, and generosity of our incredible community. This year has been a powerful reminder of what's possible when people come together in support of habitat conservation and the raptors that grace our skies.

At Blackland Prairie Raptor Center, our mission remains clear: to conserve and rehabilitate native raptor species while educating and inspiring the public about their vital role in our ecosystem. In 2025, our rehabilitation team provided expert care to 631 injured raptor patients, each one representing a life touched and a renewed commitment to giving raptors a second chance whenever possible.

Education continued to be a cornerstone of our work. This year, we welcomed three new ambassador birds, strengthening our ability to connect people with raptors in meaningful, memorable ways. Through our outreach and raptor programs, we were honored to engage more than 35,000 children and adults, fostering deeper appreciation for these remarkable birds and the habitats they depend on.

We also reached an exciting milestone in 2025 as our conservation team developed and launched community education programs for the first time, expanding how we engage, inspire, and empower our community to protect wildlife and preserve the native habitats they call home.

This report highlights the progress we've made, the impact you helped create, and the goals we're pursuing next. None of this would be possible without you—our dedicated volunteers, donors, partners, and advocates. Your support fuels our mission, and together, we are making a lasting difference.

Thank you for being part of this journey. As we look ahead to 2026, I'm excited for what's to come and confident that, together, we will continue to protect and celebrate these incredible birds of prey.

With gratitude,

*Laura Johnson*

Laura Johnson  
Executive Director



**INJURED BIRD?**  
Call 469-964-9696  
9 am - 3 pm  
7 days a week



# MEET OUR TEAM



## BOARD OF DIRECTORS

Courtney Scott, Board Chair  
Elisa Caywood, Secretary  
Laura Johnson, Executive Director

Marla Layne, Vice Chair  
Henry Merrick Darley, Treasurer  
John Frost, Member At-Large

## BLACKLAND PRAIRIE RAPTOR CENTER TEAM



**Laura Johnson**  
Executive  
Director



**Janel Mason, DVM**  
Medical Director



**Marla Layne**  
Community  
Engagement Director



**Hailey LeBaron**  
Community  
Engagement Mgr.



**Karen Mitchell**  
Maintenance &  
Operations Mgr.



**Cheryl Circo**  
Raptor  
Ambassador Mgr.



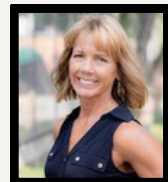
**Cody Hoya**  
Conservation &  
Restoration Mgr.



**Andrea Darley Hanson**  
Program Coordinator



**Stephanie Losoya**  
Volunteer Coordinator



**Wendy Matthews**  
Bookkeeper



## MEET OUR TEAM

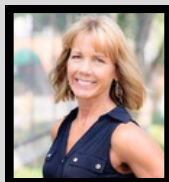


## WELCOME OUR NEWEST TEAM MEMBERS



**Stephanie Losoya**  
Volunteer  
Coordinator

“I was drawn to the Blackland Prairie Raptor Center because of what these birds represent—they're living indicators of a healthy, balanced ecosystem. As someone passionate about environmental conservation and native species, I see raptors as essential players in our local prairie, keeping populations in check and showing us when something's off balance. What really excites me is blending my background as an educator with conservation work, helping share the stories of these birds and making conservation accessible to our community. The Blackland Prairie is a unique and disappearing ecosystem, and the Raptor Center gives us a tangible way to connect people to its preservation. I'm genuinely excited to be part of BPRC's mission—it's the kind of work that creates real change, one rescued bird and one educated community member at a time.”



**Wendy Matthews**  
Accountant

“My first experience exploring nature was with the Girl Scouts. Since then, I have explored trails, mountains, campgrounds, and adopted stray dogs for as long as I can remember. My love for nature and animals has finally found its way to Blackland Prairie Raptor Center. When the bookkeeping opportunity became available, I knew it would be the perfect fit. Navigating the non-profit side of accounting has been a welcome challenge. As my passion for nature continues to evolve, I am amazed and inspired by the enthusiasm, expertise and commitment to raptor rehabilitation and education shared with an exceptional team of individuals. I'm equally inspired by our volunteers as well.”



## CONSERVATION SPOTLIGHT

On February 25<sup>th</sup>, 2025, we had our prescribed burn of just over 30 acres of the north prairie, which includes all zones around Brockdale Park down to the edge of the main buildings. This was a tremendously successful burn, with ideal weather conditions and over 18 fire professionals from 8 north Texas municipalities. In the two weeks following the burn, we hand sowed over 165 pounds of north Texas native Blackland prairie grasses and wildflowers--gratitude to each of our conservation volunteers who assisted with this effort, as well as our friends from Prairies & Timbers Audubon Society, who made grants in support of our seed purchase as well as the cost of the burn itself, and also joined us for a day of re-seeding after the burn.



The benefit of fire in prairie restoration is remarkable! Our Blackland Prairie ecosystem depends on wildfire to remain in balance, and above, you can see a photo of one area during the burn, and below, the same area just 5 weeks later:

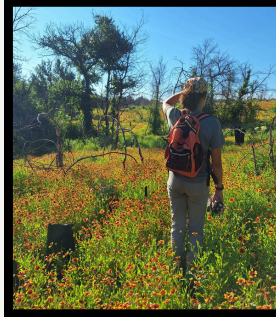


(Continued next page)



# CONSERVATION SPOTLIGHT

Beginning in June, our focus shifted from our regular invasive species removal to the harvesting and cleaning of seeds from our wonderful prairie grasses and wildflowers. Our entire Conservation team, along with summer and fall interns, have put countless hours into this effort. Creating homeowner-friendly sized packs of seeds to encourage native plant gardening and 'pocket prairies', our seed packs are available for \$5 each (suggested donation). The program rolled out in September, and in just three months has raised over \$1,000 in support for the prairie.



L to R: Conservation volunteers Maya Wickham and Tyler Hancock helping with our seed collecting efforts over the summer. Below: the dried stems and seeds of prairie beardtongue, *Penstemon cobaea*, a showy favorite in the prairie.

Additionally, our seed harvesting effort has provided seeds to other north Texas conservation efforts including Blackland Prairie Texas Master Naturalists, Holifield Science & Learning Center, and Monarch View Park in Frisco. We look forward to this sustainable effort growing into long-term support for prairie conservation at BPRC and also through our growing network of partner conservationists.



**Purple Prairie Clover**  
*Lespedeza bicolor*

This perennial grass (2-3 feet tall) is native to the prairie. It is a member of the legume family and is known for its vibrant purple flowers. It is a common sight in prairie fields and is often used as a cover crop. It is also a favorite food source for monarch butterflies.

1. Native to the prairie  
2. 2-3 feet tall  
3. Purple flowers  
4. Legume family  
5. Monarch butterfly food source

1000-12

**American Basketflower**  
*Phlox pilularis*

This perennial herb (1-2 feet tall) is native to the prairie. It is a member of the Malvaceae family and is known for its bright red flowers. It is a common sight in prairie fields and is often used as a cover crop. It is also a favorite food source for monarch butterflies.

1. Native to the prairie  
2. 1-2 feet tall  
3. Bright red flowers  
4. Malvaceae family  
5. Monarch butterfly food source

1000-13

**Indian Blanket Flower**  
*Liatris pycnostachya*

This perennial herb (2-3 feet tall) is native to the prairie. It is a member of the Liatris family and is known for its bright red flowers. It is a common sight in prairie fields and is often used as a cover crop. It is also a favorite food source for monarch butterflies.

1. Native to the prairie  
2. 2-3 feet tall  
3. Bright red flowers  
4. Liatris family  
5. Monarch butterfly food source

1000-14

**Texas Thistle**  
*Cirsium leucanthemum*

This perennial herb (2-3 feet tall) is native to the prairie. It is a member of the Asteraceae family and is known for its bright purple flowers. It is a common sight in prairie fields and is often used as a cover crop. It is also a favorite food source for monarch butterflies.

1. Native to the prairie  
2. 2-3 feet tall  
3. Bright purple flowers  
4. Asteraceae family  
5. Monarch butterfly food source

1000-15

**White Prairie Clover**  
*Lespedeza virginica*

This perennial grass (2-3 feet tall) is native to the prairie. It is a member of the legume family and is known for its bright white flowers. It is a common sight in prairie fields and is often used as a cover crop. It is also a favorite food source for monarch butterflies.

1. Native to the prairie  
2. 2-3 feet tall  
3. Bright white flowers  
4. Legume family  
5. Monarch butterfly food source

1000-16

**Prairie Parsley**  
*Pastinaca sativa*

This perennial herb (2-3 feet tall) is native to the prairie. It is a member of the Umbelliferae family and is known for its bright white flowers. It is a common sight in prairie fields and is often used as a cover crop. It is also a favorite food source for monarch butterflies.

1. Native to the prairie  
2. 2-3 feet tall  
3. Bright white flowers  
4. Umbelliferae family  
5. Monarch butterfly food source

1000-17

**Illinois Bundleflower**  
*Desmodium illinoense*

This perennial herb (2-3 feet tall) is native to the prairie. It is a member of the Leguminosae family and is known for its bright purple flowers. It is a common sight in prairie fields and is often used as a cover crop. It is also a favorite food source for monarch butterflies.

1. Native to the prairie  
2. 2-3 feet tall  
3. Bright purple flowers  
4. Leguminosae family  
5. Monarch butterfly food source

1000-18

**Lemon Mint**  
*Monarda citrifolia*

This perennial herb (2-3 feet tall) is native to the prairie. It is a member of the Labiateae family and is known for its bright yellow flowers. It is a common sight in prairie fields and is often used as a cover crop. It is also a favorite food source for monarch butterflies.

1. Native to the prairie  
2. 2-3 feet tall  
3. Bright yellow flowers  
4. Labiateae family  
5. Monarch butterfly food source

1000-19

**Green Milkweed**  
*Asclepias tuberosa*

This perennial herb (2-3 feet tall) is native to the prairie. It is a member of the Asclepiadaceae family and is known for its bright yellow flowers. It is a common sight in prairie fields and is often used as a cover crop. It is also a favorite food source for monarch butterflies.

1. Native to the prairie  
2. 2-3 feet tall  
3. Bright yellow flowers  
4. Asclepiadaceae family  
5. Monarch butterfly food source

1000-20

**Partridge Pea**  
*Chamaecrista fasciata*

This perennial herb (2-3 feet tall) is native to the prairie. It is a member of the Leguminosae family and is known for its bright yellow flowers. It is a common sight in prairie fields and is often used as a cover crop. It is also a favorite food source for monarch butterflies.

1. Native to the prairie  
2. 2-3 feet tall  
3. Bright yellow flowers  
4. Leguminosae family  
5. Monarch butterfly food source

1000-21

**Baldwin's Ironweed**  
*Veronica baldwinii*

This perennial herb (2-3 feet tall) is native to the prairie. It is a member of the Veronicaceae family and is known for its bright purple flowers. It is a common sight in prairie fields and is often used as a cover crop. It is also a favorite food source for monarch butterflies.

1. Native to the prairie  
2. 2-3 feet tall  
3. Bright purple flowers  
4. Veronicaceae family  
5. Monarch butterfly food source

1000-22

**Little Bluestem**  
*Schizanthus spangianus*

This perennial grass (2-3 feet tall) is native to the prairie. It is a member of the Poaceae family and is known for its bright blue flowers. It is a common sight in prairie fields and is often used as a cover crop. It is also a favorite food source for monarch butterflies.

1. Native to the prairie  
2. 2-3 feet tall  
3. Bright blue flowers  
4. Poaceae family  
5. Monarch butterfly food source

1000-23

**Indiangrass**  
*Sorghastrum nutans*

This perennial grass (2-3 feet tall) is native to the prairie. It is a member of the Poaceae family and is known for its bright yellow flowers. It is a common sight in prairie fields and is often used as a cover crop. It is also a favorite food source for monarch butterflies.

1. Native to the prairie  
2. 2-3 feet tall  
3. Bright yellow flowers  
4. Poaceae family  
5. Monarch butterfly food source

1000-24

**Leavenworth's Eryngo**  
*Eryngium leavenworthii*

This perennial herb (2-3 feet tall) is native to the prairie. It is a member of the Eryngiaceae family and is known for its bright purple flowers. It is a common sight in prairie fields and is often used as a cover crop. It is also a favorite food source for monarch butterflies.

1. Native to the prairie  
2. 2-3 feet tall  
3. Bright purple flowers  
4. Eryngiaceae family  
5. Monarch butterfly food source

1000-25

**Rattlesnake Master**  
*Eryngium yuccifolium*

This perennial herb (2-3 feet tall) is native to the prairie. It is a member of the Eryngiaceae family and is known for its bright white flowers. It is a common sight in prairie fields and is often used as a cover crop. It is also a favorite food source for monarch butterflies.

1. Native to the prairie  
2. 2-3 feet tall  
3. Bright white flowers  
4. Eryngiaceae family  
5. Monarch butterfly food source

1000-26

**Snow-On-The-Prairie**  
*Euthamia occidentalis*

This perennial herb (2-3 feet tall) is native to the prairie. It is a member of the Asteraceae family and is known for its bright white flowers. It is a common sight in prairie fields and is often used as a cover crop. It is also a favorite food source for monarch butterflies.

1. Native to the prairie  
2. 2-3 feet tall  
3. Bright white flowers  
4. Asteraceae family  
5. Monarch butterfly food source

1000-27

**Texas Blazing Star**  
*Liatris pycnostachya*

This perennial herb (2-3 feet tall) is native to the prairie. It is a member of the Liatris family and is known for its bright red flowers. It is a common sight in prairie fields and is often used as a cover crop. It is also a favorite food source for monarch butterflies.

1. Native to the prairie  
2. 2-3 feet tall  
3. Bright red flowers  
4. Liatris family  
5. Monarch butterfly food source

1000-28

**Maxillaria Sunflower**  
*Helianthus maximiliani*

This perennial herb (2-3 feet tall) is native to the prairie. It is a member of the Asteraceae family and is known for its bright yellow flowers. It is a common sight in prairie fields and is often used as a cover crop. It is also a favorite food source for monarch butterflies.

1. Native to the prairie  
2. 2-3 feet tall  
3. Bright yellow flowers  
4. Asteraceae family  
5. Monarch butterfly food source

1000-29

**Prairie Pendemon**  
*Penstemon adamsii*

This perennial herb (2-3 feet tall) is native to the prairie. It is a member of the Penstemonaceae family and is known for its bright purple flowers. It is a common sight in prairie fields and is often used as a cover crop. It is also a favorite food source for monarch butterflies.

1. Native to the prairie  
2. 2-3 feet tall  
3. Bright purple flowers  
4. Penstemonaceae family  
5. Monarch butterfly food source

1000-30





# REHABILITATION SPOTLIGHT

## REHAB STORIES

### *2025 Brought Us Second Chances*



#### **A Story of Patience**

This Barred Owl was admitted to our Raptor Clinic on January 19, 2025, after being struck by a vehicle. Its most severe injury was a fracture of the mandible, or lower beak.

A raptor's beak is made of a thin layer of keratin covering the underlying bone. When damage is not extensive, beak fractures can heal and the keratin can regrow, though this process often takes months. Proper alignment is critical—if the beak does not close correctly, it will not wear normally, preventing the bird from eating and making release impossible.

The day after admission, clinic staff applied a wooden splint to stabilize the mandible. Over the following weeks, the owl was closely monitored in our Intensive Care Unit for beak alignment, feather condition, and signs of head trauma. In April, the owl began showing normal defensive behaviors—an encouraging sign of recovery—and was soon moved to an outdoor aviary.

Throughout rehabilitation, staff carefully tracked the owl's food intake by weighing daily meals and leftovers. While it ate independently, occasional assisted feeding ensured it maintained strength. In July, light physical therapy began, encouraging short flights while monitoring flight symmetry and sound. The flight feathers were damaged during its collision and silent flight is essential for owls to hunt successfully.

Live prey was introduced in August to assess hunting ability, and physical conditioning increased in the fall. By December, the owl had new feathers and its flight was silent and controlled, and it was successfully capturing live mice.

After 11 months of dedicated care, this Barred Owl was released back into the wild. Its recovery reflects the patience, skill, and daily commitment of our staff and volunteers—and the lasting impact of your support.



## **What to do if you find an injured raptor...**

Please go to: <https://bpraptorcenter.org/raptor-rescue/>  
For further information call 469-964-9696.



# REHABILITATION SPOTLIGHT

## REHAB STORIES



### Healing While Helping Others

This Great Horned Owl was admitted to our Raptor Clinic after becoming lodged in the grill of a moving vehicle. The collision caused significant injuries, including head trauma, subcutaneous emphysema (air trapped beneath the skin), and a collapsed globe of the eye. Despite the severity of her condition, this owl showed remarkable resilience from the moment she arrived.

During the early stages of care, our medical team focused on stabilizing her injuries and closely monitoring her neurological status. Head trauma in raptors can be unpredictable, requiring careful observation and supportive care over time. As swelling subsided, it became clear that the damaged eye could not be salvaged. To relieve pain and prevent further complications, the owl underwent an eye evisceration surgery—a procedure that allows birds to remain comfortable and functional despite permanent vision loss.

While recovering, this owl took on an unexpected and meaningful role. During baby season, orphaned Great Horned Owl nestlings require exposure to adult owl behaviors. This patient became a foster parent, helping raise young owlets while continuing her own recovery. Her presence provided critical social and behavioral development for the chicks and reduced the need for intensive human intervention.

As her healing progressed, the owl transitioned to an outdoor aviary, where staff closely monitored her flight, balance, and hunting ability. Even with vision in only one eye, she demonstrated strong, coordinated flight and successfully hunted live prey—meeting all the criteria required for release.

After months of dedicated medical care, rehabilitation, and foster parenting, this Great Horned Owl was returned to the wild. Her story highlights not only the resilience of raptors, but also the depth of impact made possible through expert veterinary care, thoughtful rehabilitation, and the commitment of staff and volunteers. In helping this owl heal, she in turn helped raise the next generation—an outcome that perfectly reflects our mission.



**Whether helping with the financial cost of caring for this patient, providing food when asked, or simply sharing these stories to those around you, your efforts have helped this and other patients in BPRC care!**





# REHABILITATION SPOTLIGHT

## REHAB STORIES



### From Paralysis to Freedom

This Red-tailed Hawk was admitted to our Raptor Clinic after a suspected collision with a window. When it arrived, the hawk was unable to stand and showed signs consistent with paralysis—an alarming presentation that often indicates significant trauma.

Our medical team immediately focused on stabilization and supportive care, closely monitoring neurological function and providing treatment aimed at reducing inflammation and allowing the body time to heal. Window strikes can cause severe concussive injuries in birds of prey, and recovery depends on careful management and patience.

Over the following weeks, the hawk began showing small but meaningful improvements. Sensation slowly returned, followed by the ability to stand and balance. As strength improved, the bird progressed from assisted perching to short, controlled movements within its enclosure. With continued rehabilitation, the hawk was transitioned to a flight aviary, where staff closely observed its ability to fly, land, and perch confidently. Gradually, its flights became stronger and more coordinated, and it demonstrated the alertness and posture expected of a healthy Red-tailed Hawk.

Today, this hawk is flying and perching normally and continues to build endurance in preparation for release. Its recovery is a powerful example of how skilled medical care, attentive rehabilitation, and time can turn a potentially fatal injury into a second chance at life. Stories like this one reflect the impact of your support—helping injured raptors move from crisis to recovery and, ultimately, back to the wild where they belong.



**Whether helping with the financial cost of caring for this patient, providing food when asked, or simply sharing these stories to those around you, your efforts have helped this and other patients in BPRC care!**





# EDUCATION SPOTLIGHT

## ENRICHMENT CORNER

This summer, our enrichment corner got a big update. With more space to store items and improved signage to guide volunteers through the creation process, the changes were very well received. Enrichment is a vital part of the care we provide for our birds.

By introducing new sights, challenges, and experiences into their daily routines, enrichment supports both the mental and physical health of our raptors. Activities can be as simple as searching for food hidden in paper or watching a pinwheel spin outside an enclosure, yet these small changes have a meaningful impact on quality of life. Each education ambassador has a personalized enrichment schedule designed to meet their individual needs.

These experiences encourage natural behaviors such as foraging, exploring, and exercising through rotating perches, novel objects, and varied textures and materials. By creating a dynamic and engaging environment, enrichment helps prevent boredom, reduce stress, and promote overall wellbeing in ways that mirror the variety birds would encounter in the wild.



***Every day brings something new for our birds thanks to our incredible animal care volunteers. From inventive enrichment ideas to hands-on care, their creativity keeps our resident raptors mentally sharp and physically active. We are deeply grateful for the passion and time our volunteers bring to everything we do.***

### Adopt an Education Ambassador

Becoming a sponsor supports the feeding, care and any medical treatments of one of our raptor ambassadors for one year. Adopt a raptor for yourself and one for a friend or family member as a gift!





# AMBASSADOR HIGHLIGHT

## PAINTING WITH PETUNIA



Petunia is best known for her energetic runs, hops, and flights during educational programs, but she also has a creative side. Painting with Petunia has been offered for several years and saw a notable increase in bookings over the past year.

What began as a simple enrichment activity—designed to give Petunia a new and engaging experience—quickly became a favorite for both her and her trainers. The process is always entertaining, with paint often ending up not just on the canvas, but occasionally on the trainer as well.

Petunia paints using non-toxic tempera paint, the same type commonly used by children for finger painting, ensuring safety even if the paint travels beyond the canvas. Each session highlights her unique personality and creativity, as she very clearly decides when a piece is finished.

Painting with Petunia is not only enriching for her, but also helps financially support her care. Participants select the colors, but Petunia is the true artist—creating a one-of-a-kind masterpiece every time.



### ***Blackland Prairie Raptor Center***

BPRC is a 501 (c)(3) non-profit organization. BPRC receives no federal or state funding. All operating funds come from donations, grants, and educational programming.

We are dedicated to educating the public about birds of prey and their role in maintaining a healthy environment. We are committed to restoring and maintaining the Blackland Prairie habitat at Brockdale Park.

We present approximately two hundred programs each year to school groups, Scout groups, libraries, church groups, and day camps.

BPRC is open to the public on the First Saturday of each month.

### ***Partners***

U S Army Corps of Engineers  
Texas Master Naturalists  
Prairie and Timbers Audubon Society  
HEB

### ***Support***

Adopt - A - Raptor  
Prairie Partners  
Donate Directly  
Scout Projects  
Volunteers - Individual and Groups



Blackland Prairie  
**RAPTOR  
CENTER**



# SUPPORT OUR MISSION



## PROGRAM OPPORTUNITIES

- **Live Raptor Program**
- **Field Trips**
- **Behind the Scenes Tour of BPRC**
- **Education Booth**
- **Camping at Brockdale Park**
- **Scout Programs**
- **Spring/Summer Camp**
- **Homeschool Day**

**Live Raptor Program** The educational program introduces children and adults to the world of raptors. These hawks, owls and falcons are well trained, and with the assistance of BPRC education specialists, show you what makes them an important part of our environment. You will discover their roles in the food chain and their unique adaptations to hunt in woodland, wetlands and prairies. There's no better way to learn about the birds of prey in North Texas than to meet them in person! Also available in a virtual setting.

**Field Trips** Join us at BPRC for a great day of education. This event includes a raptor presentation, guided trail hike through the native Blackland Prairie, and age appropriate educational activities.

**Behind the Scenes Tour of BPRC** Ever wondered what the day-to-day looks like at the Blackland Prairie Raptor Center? This is your opportunity to tour the "behind the scenes" area to learn more about what we do on a daily basis. As an added bonus, you will have the opportunity to meet our full crew of raptor ambassadors!

**Camping - Book our Park** Spend the night at our incredible facility. Enjoy the beautiful scenery - natural setting with Lavon Lake as our backdrop and remnant prairie considered an endangered ecosystem with plants unique to this habitat.

**Scout Programs** Scout Badge Program opportunities at Blackland Prairie Raptor Center offer hands-on experiences in conservation, wildlife education, and outdoor skills.

**Spring/Summer Camps** An exciting outdoor adventure that includes an up-close look at nature and curiosity-sparking activities - all while having an absolute blast.

**Homeschool Day** Monthly programs offer hands-on, outdoor learning experiences and creative art activities designed especially for homeschool students.



Programs are a great gift for single, married, or a small group of bird lovers!  
To find out more about all of our BPRC Programs, visit: <https://bpraptorcenter.org/programs/>



# SUPPORT OUR MISSION

## LOTS OF WAYS TO DONATE

Our restoration, rehabilitation, and education initiatives are made possible through the generous donations of individuals, families, foundations and businesses. For over 20 years, supporters like you have been the key to the Blackland Prairie Raptor Center's success.

There are many ways to support the Blackland Prairie Raptor Center. Giving through the Annual Fund, becoming part of our Friends of a Feather or Prairie Partner Monthly Giving Society, or Adopting a Raptor are the most direct paths to help the Blackland Prairie Raptor Center focus on our funding priorities, like:



- **Providing outstanding medical care to hospital patients**
- **Supporting the training and care of our education ambassadors**
- **Educating students across North Texas about the importance of raptors and land conservation**
- **Expanding our conservation and restoration efforts**
- **Creating memorable visitor experiences**



Scan here or visit our website at:  
<https://bpraptorcenter.org/donate/>

